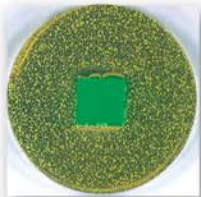
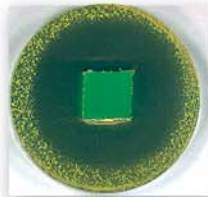


# Prevenz™ Antimicrobial Wheels

Helps control bacteria, molds,  
mildew, fungi and odors



WITHOUT PREVENZ™



WITH PREVENZ™

*Above photos show the difference in bacterial growth over a seven day incubation period.*



# ALBION®

[www.albioninc.com](http://www.albioninc.com)



## Applications

- Scientific and Research
- Medical and Healthcare
- Pharmaceutical
- Chemical
- Food processing
- Clean rooms
- Any application where controlling microbes is important

# PREVENZ™

## The Prevenz Story

### How Does Prevenz™ Work?

The antimicrobial compound used in Prevenz™ wheels is designed to suppress the growth of a variety of destructive and odor causing microbes including bacteria, molds, mildew, and fungi. The active ingredients neutralize the ability of microbes to function, grow and reproduce.

### How long does the protection last?

Prevenz™ is engineered to be effective against microbes for the life of the wheel. The agent remains stored in the polymer and is gradually released to the surface of the wheel.

### Will scratches, tread wear or wax buildup diminish the effectiveness?

No. Prevenz™ protection is not a coating on the surface of wheel. It is an integral part of the wheel material. Abrasion, chips or scratches will not impact the effectiveness of Prevenz™ in any way. Not even wax buildup on the wheel can impair the bacteria fighting performance.

### Does Prevenz™ eliminate the need for cleaning?

No. Although Prevenz™ provides an added level of protection, these wheels do not eliminate the need for normal cleaning practices. They are designed to work in conjunction with and enhance your ongoing program. Good hygiene practices should always be observed.

### Is Prevenz™ safe?

Yes. The active ingredients in Prevenz™ have undergone extensive laboratory testing and have been proven safe.

The active ingredient has a history of hospital use for more than 25 years and is used in a broad range of popular personal care products, such as antimicrobial soap, toothpaste and deodorant. It is registered with the US Environmental Protection Agency (EPA), and products with this material have been approved by the US Food & Drug Administration (FDA), the European Union (EU), the National Sanitation Foundation (NSF) and other regulatory authorities around the world.



## Features

- Suppresses growth of microbes
- Helps control bacteria, molds, mildew, fungi and odors
- Lasts the functional life of the product
- Reduces wheel decay and deterioration
- Resists color fading and discoloration to retain attractive appearance
- Complete line of Prevenz™ wheels



**ALBION®**  
[www.albioninc.com](http://www.albioninc.com)  
 800-835-8911



**Albion Prevenz™ wheels combat bacteria without compromising performance.** Rolling resistance is extremely low making Prevenz™ wheels some of the easiest to roll in the market. The tread is extremely durable, yet it rolls much quieter than hard plastic or metal wheels. Plus, it is non-marking and offers excellent floor protection. Prevenz™ is right at home in even the harshest environments and offers excellent resistance to damage from water, chemicals, solvents and petroleum products. You can easily identify these wheels by the attractive Prevenz™ blue tread.



## Prevenz™ XP (Solid Polyurethane)

Wheel Diameter (Inches)	Tread Width (Inches)	Capacity (Rated for Manual Operation)	Hub Length (Inches)	Bore ID (Inches)	Bearing ID (Inches)	Approx. Weight (Lbs)	Wheel Number With Precision Ball Bearing
4	2	1400	2 7/16	1 3/16	1/2	1	XP0422808 PREV
5	2	1200	2 7/16	1 3/16	1/2	1 1/2	XP0522808 PREV
6	2	1400	2 7/16	1 3/16	1/2	1 3/4	XP0622808 PREV
8	2	1200	2 7/16	1 3/16	1/2	4	XP0822808 PREV
8	2 1/2	2000	3 1/4	1 15/16	3/4	4	XP0842812 PREV
8	3	2000	3 1/4	1 15/16	3/4	4	XP0852812 PREV
10	2 1/2	2500	3 1/4	1 15/16	3/4	8	XP1042812 PREV
10	3	2500	3 1/4	1 15/16	3/4	8	XP1052812 PREV

To order 2-Piece Delrin Bearing change 6th and 7th digit to "51". Hub length is 2-3/16, bearing ID is 3/4". Not available for 2-1/2" or 3" tread width models.

To order Roller Bearing change 6th and 7th digit to "01". Hub length is 2-3/16, bearing ID is 3/4". Not available for 2-1/2" or 3" tread width models. Roller bearings come complete with spanner bushing & nylon sealed retaining thrust washers.



## Prevenz™ XB (Polyurethane Tread)

Wheel Diameter (Inches)	Tread Width (Inches)	Capacity (Rated for Manual Operation)	Hub Length (Inches)	Bore ID (Inches)	Bearing ID (Inches)	Approx. Weight (Lbs)	Wheel Number With Delrin Bearing
3	1 3/8	300	1 1/4	15/16	1/2	3/8	XB0305108 PREV
3 1/2	1 3/8	360	1 1/4	15/16	1/2	3/8	XB03X5108 PREV
4	1 3/8	400	1 1/4	15/16	1/2	1/2	XB0405108 PREV
5	1 3/8	440	1 3/8	15/16	1/2	3/4	XB0505108 PREV



## Prevenz™ XA (Polyurethane Tread)

Wheel Diameter (Inches)	Tread Width (Inches)	Capacity (Rated for Manual Operation)	Hub Length (Inches)	Bore ID (Inches)	Bearing ID (Inches)	Approx. Weight (Lbs)	Wheel Number With Roller Bearing
4	2	600	2 3/16	1 3/16	3/4	1/2	XA0420112 PREV
5	2	750	2 3/16	1 3/16	3/4	1 3/8	XA0520112 PREV
6	2	900	2 3/16	1 3/16	3/4	2 1/2	XA0620112 PREV
8	2	1000	2 3/16	1 3/16	3/4	2 3/4	XA0820112 PREV
10	2 1/2	1500	3 1/4	1 15/16	1	3	XA1040116 PREV

Roller bearings come complete with spanner bushing & nylon sealed retaining thrust washers.

# Prevenz™ and Stainless Steel Casters

Albion recommends stainless steel casters with Prevenz™ wheels. Like Prevenz™, these casters are the ideal solution for applications where frequent washdowns are necessary. They are also well suited for applications exposed to cleaning agents, steam, caustic solutions, or other corrosive agents which could cause rust.

## 120 Series Stainless Steel Kingpinless Casters

Capacities up to 1,400 lbs each.



## 04 Series Stainless Steel Casters

Capacities up to 350 lbs each.



## 05 Series Stainless Steel Casters

Capacities up to 1,000 lbs each.



# Complete Line of Prevenz™ Antimicrobial Wheels



Prevenz™ (XB) Polyurethane/  
Mold-on Polypropylene Core  
Capacities up to 440 lbs each.



Prevenz™ (XA) Polyurethane/  
Mold-on Polypropylene Core  
Capacities up to 1,500 lbs each.



Prevenz™ (XP)  
Solid Polyurethane  
Capacities up to 2,500 lbs each.



Prevenz™ (PX) Thick Tread  
Polyurethane/Cast Iron Core  
Capacities up to 7,700 lbs each.



Prevenz™ (PY)  
Polyurethane/Cast Iron Core  
Capacities up to 8,400 lbs each.

# ALBION®

www.albioninc.com  
800-835-8911

800 North Clark Street • Albion, MI 49224  
Fax: 517-629-9501 • E-mail: info@albioninc.com



Registered to ISO9001: 2000  
File Number A10565

©COPYRIGHT 2003 ALBION INDUSTRIES, INC